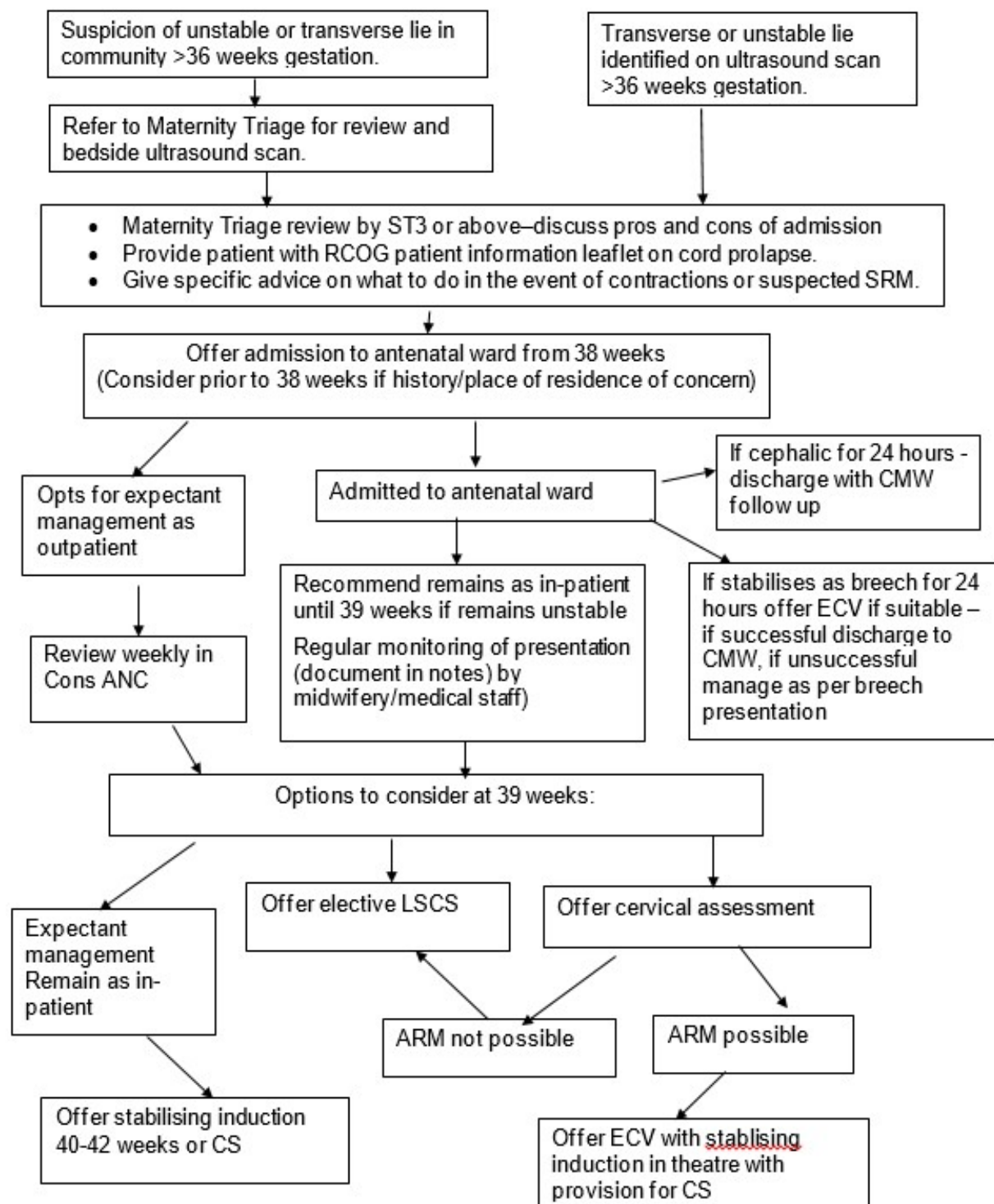


Unstable/transverse fetal lie in singleton pregnancies

Target audience	Maternity staff
Patient group	Pregnant women

Summary



Glossary

ANC	antenatal clinic
CMW	community midwife
CS	Caesarean section
ECV	external cephalic version
LSCS	lower segment Caesarean section
RCOG	Royal College of Obstetricians and Gynaecologists
SRM	spontaneous rupture of membranes
ST	specialty trainee

Lead author	L Walker	Date approved	28.8.25
Version	2	Review date	28.8.28

Clinical governance

Lead author:	L Walker
Current responsible author:	L Walker
Endorsing body:	Maternity Clinical Effectiveness Group
Version number:	2
Approval date:	28.8.25
Review date:	28.8.28

Consultation/distribution record	
Contributing authors:	G Buchanan
Consultation process:	MCEG and CGCEG
Distribution:	All in maternity via RDS application

Change record			
Date	Lead author	Change	Version
1.2.24	L Walker	Initial document	1
28.8.25	L Walker	Addition of glossary and new guideline format	2

Lead author	L Walker	Date approved	28.8.25
Version	2	Review date	28.8.28