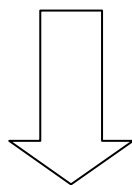
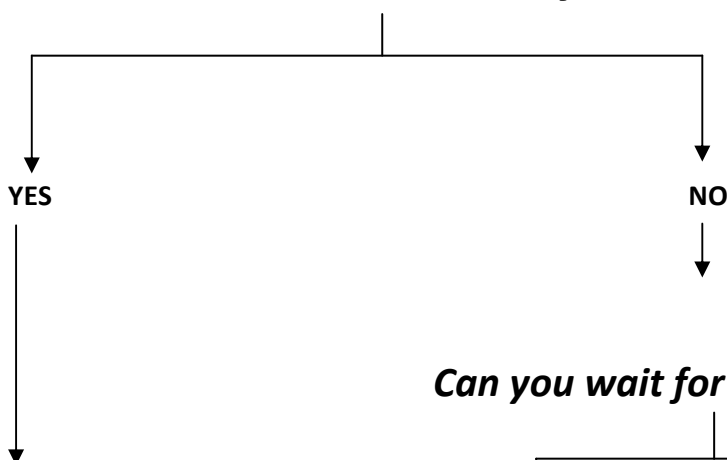


Patient imaged in Scotland? – check national PACS Global work list.

Patient imaged in England/Wales/Northern Ireland?



Is it between 9-5 Monday – Friday?



- Which hospital was the patient imaged in?
- Which area was imaged?
- Contact our PACS team 23671 to get the images transferred to the image portal.

Can you wait for office hours?

YES **NO**

- Contact the hospital the patient had their images performed in, to ascertain what was imaged and obtain the report.
- If you feel you need to see the images urgently, contact the duty manager for PACS .(The duty PACS manager will try to get the images but may not be able to get in contact with the PACS team at the original site out of hours)
- If all of the above have failed and it is essential to see the images, then the patient will, have to be re-x-rayed unfortunately.