

# Management of Dislodged Gastrostomy Tubes Procedure



## For Medical/Nursing Staff – Contact Details

RIE: Nutrition Nurse Specialist Mon-Thurs  
8am-4pm. Tel 0131 242 3635

**AFTER 4pm** contact GI REG (RIE) 0131 536 1000

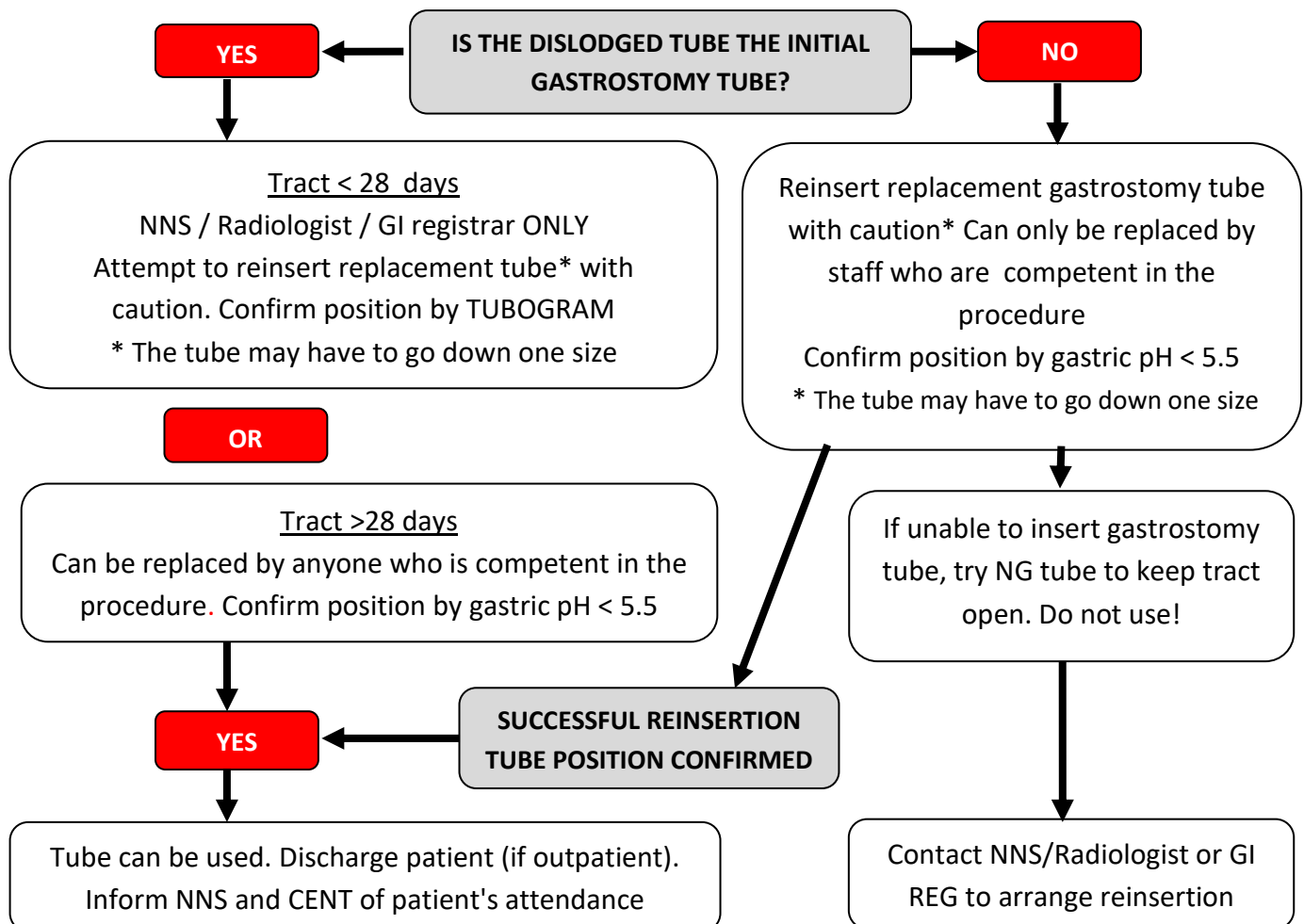
WGH: Nutrition Nurse Specialist  
Mon-Fri 8am-4pm Tel 0131 537 3695

GI REG (WGH) Tel 031 537 0000 4 pm-9pm

SJH: Mon-Fri 9am-5pm - bleep 3052  
or GI REG 9am-5pm. Tel 01506 523 000

Community Enteral Nutrition Team (CENT) –  
0131 536 7848 (or 57848 if dialling internally)

## Management Procedure



**DO NOT USE TUBE OR DISCHARGE THE PATIENT UNTIL POSITION IS CONFIRMED AND DOCUMENTED.**