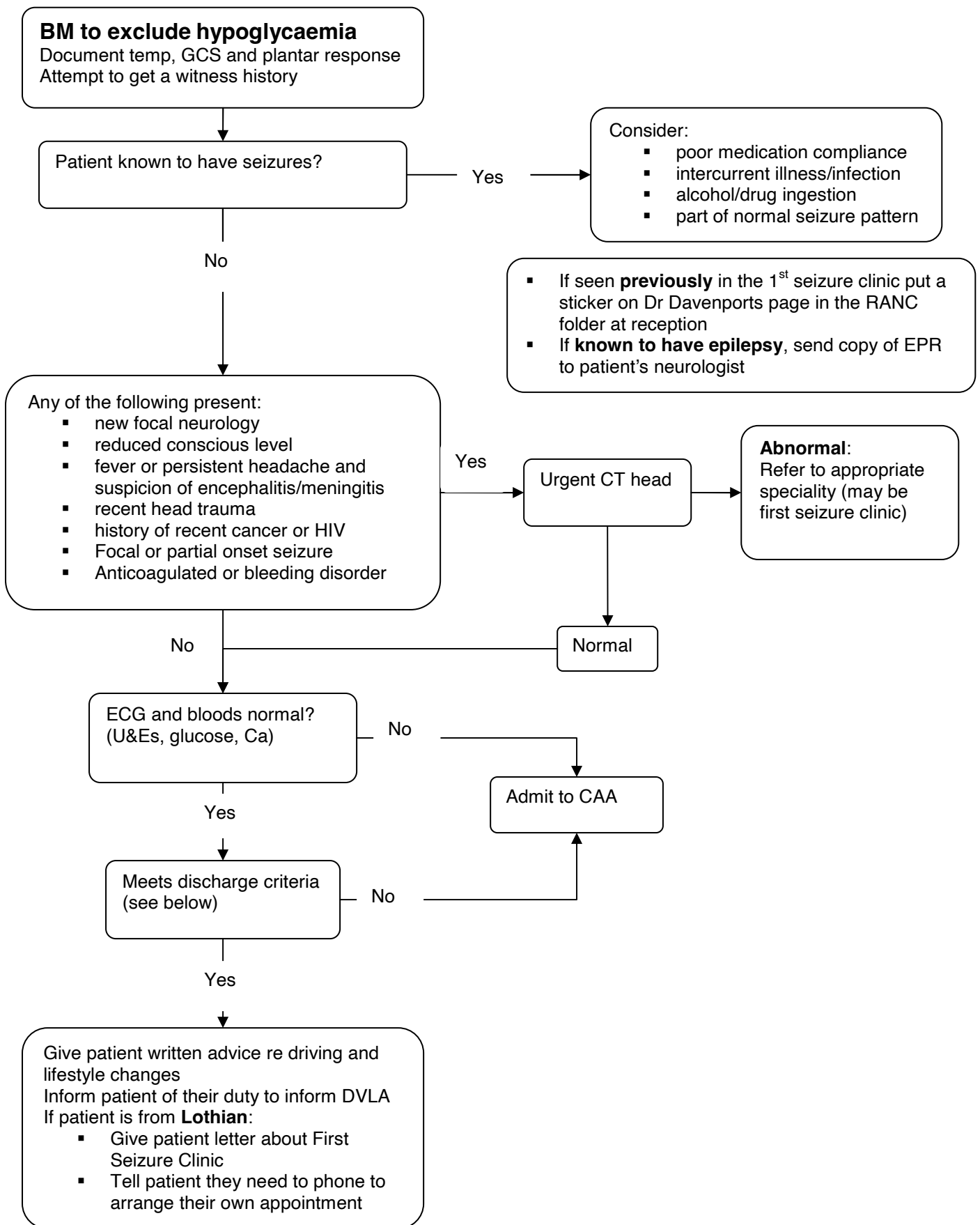


Adult Seizure Protocol



Management of Adults with an Uncomplicated First Generalised Seizure

Inclusion Criteria	Patients >16 yrs; Clear history of first generalised seizure; Seizures related to drug or alcohol ingestion or withdrawal	Name: DoB: Address Tel no
Exclusion Criteria	Patients with non-epileptic attacks (e.g. syncope, panic attacks, pseudoseizures); Patients with known seizure or metabolic disorder; Seizures related to recent trauma or eclampsia	

History Table

	✓
Witness History	
Type of seizure (generalised, partial)	
Previous history of seizures, febrile fits, birth trauma, meningitis, head injuries	
Family history of seizures	
Possible precipitating events (alcohol, drugs, sleep deprivation)	

Temperature			Pulse		Bp		BM		Breath Alcohol			
GCS			Pupils				Limb movement					
			Right		Left		R arm	L arm	R leg	L leg		
E	M	V	Size	Reaction	Size	Reaction						

ECG			
Urea		Hb	
Creat		MCV	
Na		WBC	
K		Plt	
CO2		Bil	
Ca		GGT	
Alb		ALT	
Gluc		Alk Phos	
CT			

Indications for a CT scan prior to disposition:

- New focal neurology
- Reduced conscious level
- Fever or persistent headaches with suspicion of encephalitis/meningitis
- Recent head trauma
- History of recent cancer or HIV infection
- Patients with focal or partial onset seizures
- Patients whose follow up cannot be ensured
- Anticoagulation or bleeding diathesis

Discharge Table

	✓
Patient has a Lothian Postcode	
Patient has fully recovered with no persistent neurological symptoms/signs (including headache)	
Normal investigations and observations (including temperature)	
Patient has been given written advice about driving and lifestyle changes, and has been informed of their duty to inform the DVLA, if appropriate	
Patient has a responsible adult to stay with following discharge	
Patient will attend follow up	
Patient has been given First Seizure Clinic letter	
Patient informed they must make their own appointment for follow up	
Copies of all notes and investigations forwarded to the First Seizure Clinic	